

Velvet

UNDERGLAZES

for a vivid underglaze palette



Conforms to
ASTM D-4236



Layering™



Safe for Spray
Application™



Food Safe™

* Approved when applied
and fired under AMACO LG-10,
F-10, or HF-9 clear glazes



V-308
Yellow



V-391
Intense Yellow



V-309
Deep Yellow



V-350
Orange



V-304
Straw



V-389
Flame Orange



V-390
Bright Orange



V-384
Real Orange



V-387
Bright Red



V-383
Light Red



V-388
Radiant Red



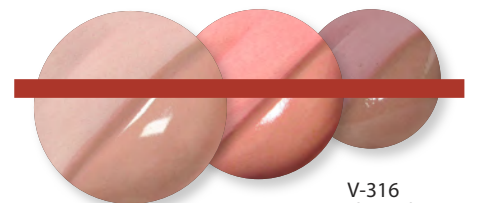
V-382
Red



V-317
Coral



V-324
Blush

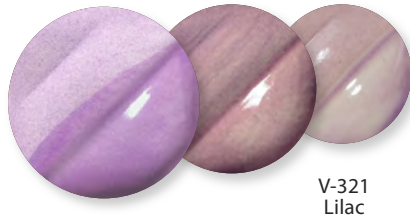


V-316
Light Pink

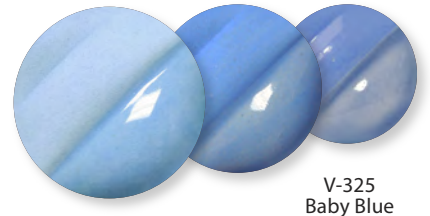
Plate: V-327 Turquoise Blue, V-387 Bright Red, V-384 Real Orange, V-369 Fawn, and HF-9 Zinc-Free Clear on 11-M A-Mix White Stoneware Clay. Fired to Cone 5.



V-379
Ultra Violet



V-321
Lilac



V-325
Baby Blue



V-380
Violet



V-320
Lavender



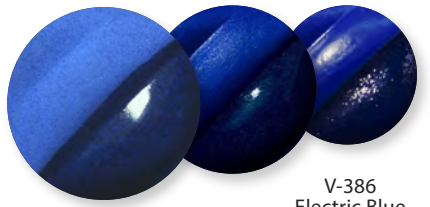
V-326
Medium Blue



V-318
Rose



V-381
Amethyst



V-386
Electric Blue



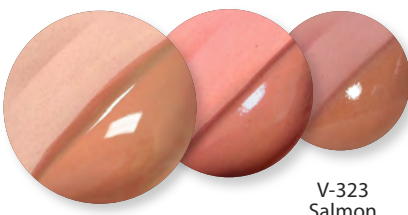
V-375
Maroon



V-322
Purple



V-336
Royal Blue



V-323
Salmon



V-315
Peach



FIRING KEY

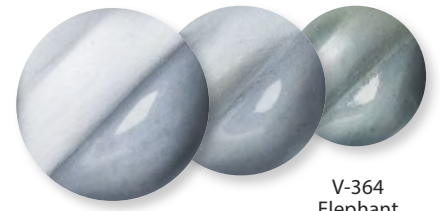
Cone 05 tiles are AMACO 20-M Versa Clay. Glazed with LG-10 Clear Transparent.
Cone 5/10 tiles are AMACO 38 White Stoneware. Glazed with HF-9 Zinc-Free Clear.

Velvet

UNDERGLAZES



V-363
Morning Fog



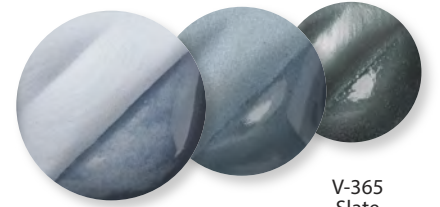
V-364
Elephant



V-328
Iceberg Blue



V-356
Pearl Gray



V-365
Slate



V-347
Pistachio



V-349
Cactus



V-372
Mint Green



V-345
Light Green



V-354
Leaf Green



V-353
Dark Green



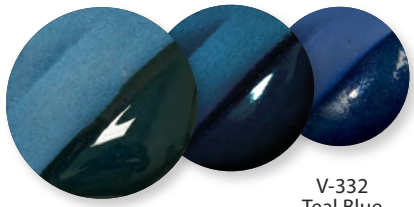
V-343
Chartreuse



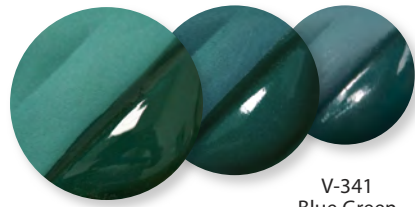
V-333
Avocado



V-376
Hunter Green



V-332
Teal Blue



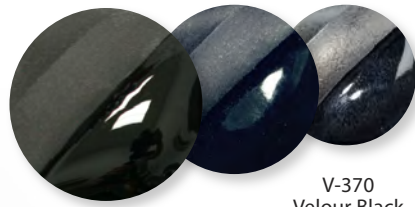
V-341
Blue Green



V-327
Turquoise Blue



V-361
Jet Black



V-370
Velour Black



V-362
Ultra Black

Cone 05 tiles are AMACO 20-M Versa Clay. Glazed with LG-10 Clear Transparent.
Cone 5/10 tiles are AMACO 38 White Stoneware. Glazed with HF-9 Zinc-Free Clear.

Town Hall: V-385 Cinnamon, V-360 White, V-370 Velour Black,
V-333 Avocado on AMACO 20-M Versa Clay. Fired to Cone 05.



V-301
Ivory Beige



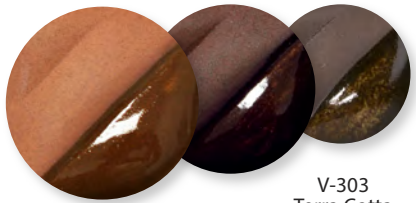
V-360
White



V-359
Ultra White



V-366
Teddy Bear Brown



V-303
Terra Cotta



V-385
Cinnamon



V-313
Red Brown



V-314
Chocolate Brown



* Approved when applied and fired under AMACO LG-10, F-10, or HF-9 clear glazes



Bank: V-387 Bright Red, V-327 Turquoise Blue, V-308 Yellow, V-360 White, V-370 Velour Black on AMACO 20-M Versa Clay. Fired to Cone 05.



FIRING KEY
17



smugs

semi-moist
underglazes

for watercolor effects.
fires most vivid at cone 05

Semi-Moist
Underglaze Pan Set
No. 108



Semi-Moist
Underglaze Pan Set
No. 109



Semi-Moist
Underglaze Pan Set
No. 110



Semi-Moist
Underglaze Pan Set
No. 111



* Approved when applied and fired under AMACO® LG-10, F-10, or HF-9 clear glazes



Conforms to
ASTM D-4236

Dinnerware
Safe

Layering



FUNDAMENTALS®



Dinnerware Safe
with Clear Glaze

Vivid Vibrant Color, economically priced -
that's our commitment to you.

You deserve consistent performance each time you use and repurchase an underglaze. Mayco's Fundamentals® were developed by our ceramic engineer, manufactured under stringent QC standards, and tested by our staff artists for color consistency, usability, and performance on various clay bodies and firing temperatures.

Fundamentals® Underglazes are AP Certified Non-Toxic and dinnerware safe when clear glaze is applied.



UG-51
China White



UG-67
Ivory



UG-46
Bright Yellow



UG-203
Squash Yellow



UG-58
Harvest Gold



UG-85
Orange Sorbet



UG-204
Orange



UG-217
Red Coral



UG-206
Fire Engine Red



UG-207
Flame Red



UG-208
Dragon Red



UG-10
Crimson



UG-215
Blush



UG-146
Pink Pink



UG-216
Peach



UG-92
Lilac



UG-87
Regal Purple



UG-93
Wild Violet



UG-94
Pansy Purple



UG-3
Baby Blue



UG-72
Wedgewood Blue



UG-2
Sea Blue



UG-97
Bright Blue



UG-1
Kings Blue



UG-19
Electra Blue



UG-82
Tuscon Turquoise



UG-219
Marine Blue



UG-209
Jade



UG-91
True Teal



UG-220
Sage



UG-68
Apple Green



UG-90
Green Mist



UG-218
Pear Green



UG-22
Spring Green



UG-21
Leaf Green



UG-210
Forest Green



UG-32
Cocoa



UG-30
Sand



UG-57
Spice Brown



UG-213
Cinnamon



UG-31
Chocolate



UG-34
Chestnut Brown



UG-53
Silver Grey



UG-221
Cement



UG-198
Dark Grey

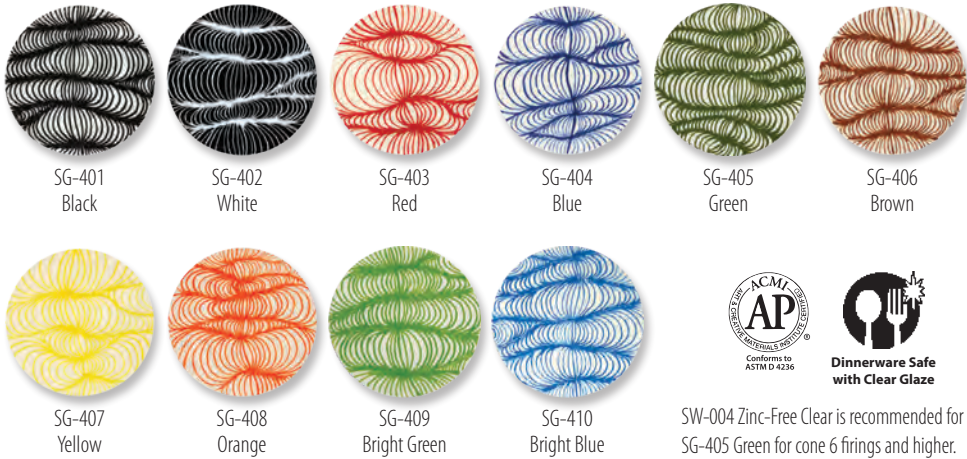


UG-50
Jet Black

DESIGNER LINER

Designer Liner is clay based and heavily pigmented. Use this versatile product to create fine detail with lines, dots, and letters. The metal writer tip allows for ultimate control to draw ultra-fine or bold lines, typography and intricate illustration, or apply with a brush to create watercolor or ink wash effects. Designer Liner is best when used under non-moving transparent or semi-transparent glazes. Designer Liner will fire matte when glaze is not applied over top. AP Non-Toxic, Food Safe and dinnerware safe when clear glaze is applied. Fires from cone 06-10, with little change in performance between firing temperatures.

For all product information, visit MaycoColors.com



DESIGNER LINER KIT

DL-KIT3 Contains 6 1.25 oz. bottles of the best selling Designer Liner colors.



SG-401 Black
SG-402 White
SG-403 Red
SG-404 Blue
SG-406 Brown
SG-408 Bright Green



Fine Detail Illustration

Try all types of linework to create depth and visual interest. Designer Liner is the tool to draw in all styles; pointillism, cross-hatching, and scumbling.

Writing Text

Use the metal writer tip or a script liner brush to find your style. Create using cursive, free-hand drawing, block-lettering, or calligraphy.



Brush Work

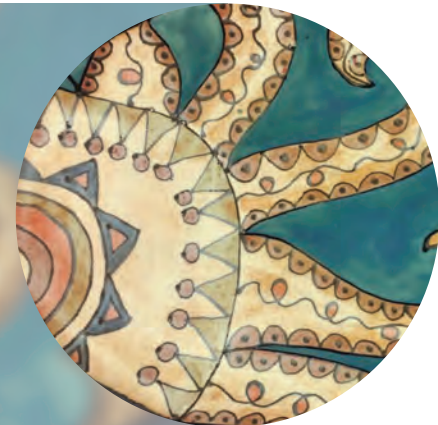
Use a brush to apply Designer Liner to simulate a watercolor or ink wash effect.



Broad Firing Range

Designer Liner enables the artist to achieve crisp, non-moving line work from cone 06 to cone 10 temperatures. To ensure sharpness in line quality, use a non-moving translucent or clear glaze over the top of Designer Liner. Fires to a matte finish without a glaze over the top.

Designer Liner in combination with Stoneware Glazes fired to cone 6



AVAILABLE SIZING



1.25 oz squeeze bottle
(includes metal writing tip)

FUNDAMENTALS® AT CONE 6

Many Fundamentals® Underglazes perform well at mid-range (cone 5/6) and higher temperatures (cone 9/10). We recommend testing at your preferred firing temperature prior to use. Cone 6 performance is noted on each color's label.



Chips shown represent Underglaze applied to mid-range stoneware bisque fired to cone 04. SW-001 Stoneware Clear Glaze was applied to the right-side of the chip and glaze fired to cone 6. SW-004 Zinc-Free Clear was applied to UG-21 Leaf Green, UG-22 Spring Green, UG-34 Chestnut Brown and UG-198 Dark Grey.



Also known as **“The Wonder Glaze”** because of its versatility of use. The unique Stroke & Coat® formulation combines the performance properties of an underglaze with the fired finish results of a gloss glaze. Stroke & Coat® glazes can be applied to earthenware, stoneware, terracotta, or porcelain surfaces of clay or bisque and can be fired from cones 06 to 6, with most colors reaching cone 10 in oxidation or reduction fire.

Stroke & Coat® is a heavily pigmented, viscous glaze line that can be used for brush strokes or opaque coverage. Use these glazes to create intricate, detailed designs and butt up to one another without colors moving. When used in a majolica process, Stroke & Coat® will not move nor blend with the colors beneath. Stroke & Coat® colors are intermixable, allowing artists to create custom shades. Thin with water or media to create a “wash” or watercolor style of design. Because the liquid color is consistent with the fired color, artists will have no trouble visualizing finished results as they create.

Performing just as their counterpart, Speckled Stroke & Coat® glazes are an enhanced version of popular Stroke & Coat® colors. The addition of small specks of color to the base glaze provides a fun visual interest that does not melt or flow during the glaze firing.

AP Certified Non-Toxic, Food Safe and Dinnerware Safe when used according to manufacturer’s directions. Stroke & Coat® glazes are suitable for artists of all ages. And because of its versatility, it is the ideal product of choice for studio, classroom, potter or fine artist. Stroke & Coat® - *The Creative Choice.*

New Glazes



SC-98
Slime Time

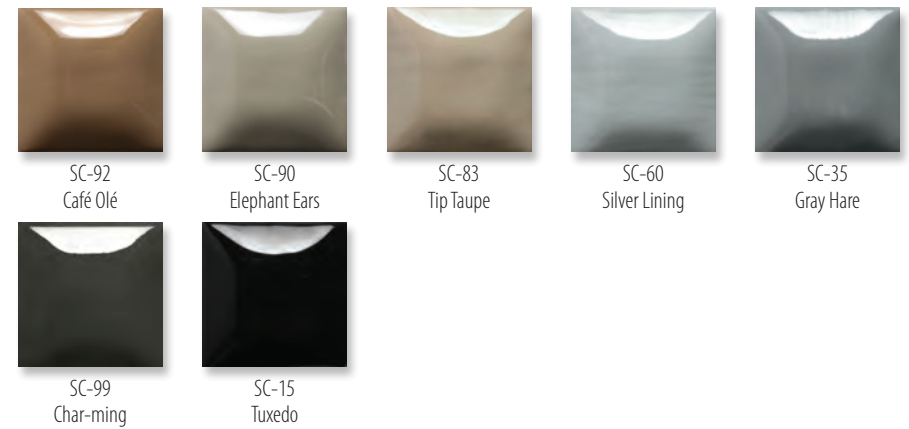


SC-99
Char-ming



MaycoColors.com

SC-16 Cotton Tail	SC-37 Ivory Tower	SC-55 Yella Bout It	SC-6 Sunkissed	SC-42 Butter Me Up
SC-24 Dandelion	SC-97 Cant-elope	SC-80 Basketball	SC-23 Jack O'Lantern	SC-50 Orange Ya Happy
SC-2 Melon-Choly	SC-89 Cutie Pie Coral	SC-75 Orange-A-Peel	SC-88 Tu Tu Tango	SC-73 Candy Apple Red
SC-74 Hot Tamale	SC-87 Ruby Slippers	SC-81 Cinnamon Stix	SC-1 Pink-A-Boo	SC-70 Pink-A-Dot
SC-95 Pinkie Swear	SC-17 Cheeky Pinky	SC-18 Rosey Posey	SC-3 Wine About It	SC-40 Blueberry Hill
SC-85 Orkid	SC-53 Purple Haze	SC-72 Grape Jelly	SC-13 Grapel	SC-33 Fruit of the Vine
SC-58 501 Blues	SC-71 Purple-licious	SC-91 Seabreeze	SC-45 My Blue Heaven	SC-65 Peri-Twinkle



General Use

One coat of Mayco Stroke & Coat® will create a translucent finish with subsequent coats adding opacity. We suggest 2-3 coats for full opacity and all over coverage. Let dry between coats. Stroke & Coat® glazes will fire to a gloss finish without clear glaze. However, if desired, a clear glaze (such as NT-CLR Clear One Dipping Glaze or S-2101 Crystal Clear Brushing) can be added. For application on wet or leatherhard clay and firing to cone 04, colors will retain their vibrancy with huge time savings. We recommend leaving an area unglazed, such as the back or bottom of the unfired piece, to allow for out-gassing of the clay during the single-firing process.

Stroke & Coat® glazes have been formulated to mature at cone 06/05. Most Stroke & Coat® glazes will maintain their color at higher temperatures, especially reds, oranges, yellows, greens, and blues. Their performance at cone 6 is noted on each individual product label with any changes. We recommend testing on your clay and in your kiln prior to use. Results at cone 6 can be found at the end of the brochure.

Stroke & Coat® glazes are AP Certified Non-Toxic, Food Safe and Dinnerware Safe when used according to manufacturer's directions.



Speckled Stroke & Coat®



Speckled Stroke & Coat® glazes provide a fun visual interest!



Stroke & Coat® at Cone 6



Mid-Range

Many Stroke & Coat® glazes perform well at mid-range (cone 5/6) and higher temperatures (cone 9/10). Darker colors such as red, orange, yellow, blue and green may darken compared to their cone 06 results. Lighter colors such as tan, purple and pink will fade. We recommend testing at your preferred firing temperature prior to use. Cone 6 performance is noted on each color's label.





SC-95
Pinkie Swear



SC-17
Cheeky Pinky



SC-18
Rosey Posey



SC-3
Wine About It



SC-40
Blueberry Hill



SC-85
Orkid



SC-53
Purple Haze



SC-72
Grape Jelly



SC-13
Grapel



SC-33
Fruit of the Vine



SC-58
501 Blues



SC-71
Purple-licious



SC-91
Seabreeze



SC-45
My Blue Heaven



SC-65
Peri-Twinkle



SC-30
Blue Dawn



SC-11
Blue Yonder



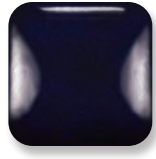
SC-31
The Blues



SC-76
Cara-Bein Blue



SC-29
Blue Grass



SC-12
Moody Blue



SC-32
Bluebeard



SC-28
Blue Isle



SC-9
Jaded



SC-10
Teal Next Time



SC-96
Aqu-ward



SC-77
Glo-Worm



SC-78
Lime Light



SC-98
Slime Time



SC-93
Honeydew List



SC-43
Lettuce Alone



SC-27
Sour Apple



SC-52
Toad-ily Green



SC-7
Leapin' Lizard



SC-79
It's Sage



SC-26
Green Thumb



SC-39
Army Surplus



SC-8
Just Froggy



SC-36
Irish Luck



SC-86
Old Lace



SC-54
Vanilla Dip



SC-46
Rawhide



SC-20
Cashew Later



SC-51
Poo Bear



SC-5
Tiger Tail



SC-25
Crackerjack Brown



SC-41
Brown Cow



SC-48
Camel Back



SC-14
Java Bean



SC-34
Down To Earth



SC-92
Café Olé



SC-90
Elephant Ears



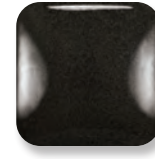
SC-83
Tip Taupe



SC-60
Silver Lining



SC-35
Gray Hare



SC-99
Char-ming



SC-15
Tuxedo



Visit MaycoColors.com to explore ideas, draw inspiration and choose your next project from our library.



Foundations®

Begin your ceramic project with Foundations®. Available in gloss opaque, gloss translucent sheer and soft matte finishes. Foundations® are an essential building block for any ceramic program. The Opaque, Sheer and Matte glazes are easy to apply, consistent in firing performance and budget friendly. Foundations® glazes dry quickly, allowing for immediate additional decorating and same day firing.



Foundations® OPAQUE

Broad palette of colors that produce a beautiful, smooth high gloss finish and can be intermixed for custom colors.

				
FN-001 White	FN-014 Antique White	FN-013 Light Yellow	FN-002 Yellow	FN-044 Yellow-Orange
				
FN-040 Pumpkin	FN-052 Tangerine	FN-016 Harvest Orange	FN-051 Strawberry	FN-049 Flamingo
				
FN-003 Orange	FN-004 Red	FN-025 Raspberry Whip	FN-015 Brick Red	FN-035 Deep Red
				
FN-047 Light Pink	FN-005 Pink	FN-048 Bright Pink	FN-012 Lavender	FN-028 Wisteria Purple
				
FN-036 Grape	FN-017 Purple	FN-011 Light Blue	FN-034 Big Sky Blue	FN-031 Corn Flower Blue
				
FN-018 Bright Blue	FN-006 Blue	FN-041 Medium Blue	FN-019 Dark Blue	FN-042 Teal Blue

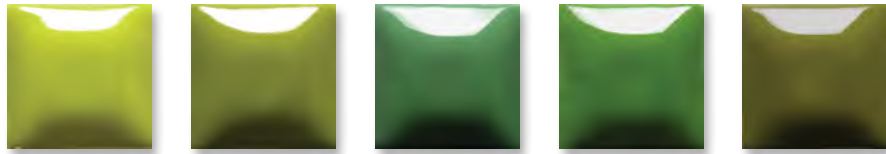
CONE
06/05
(998°C - 1031°C)
(1828°F - 1888°F)



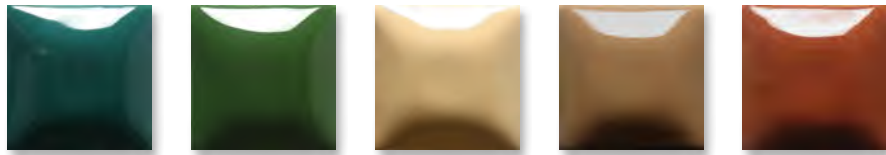
MaycoColors.com



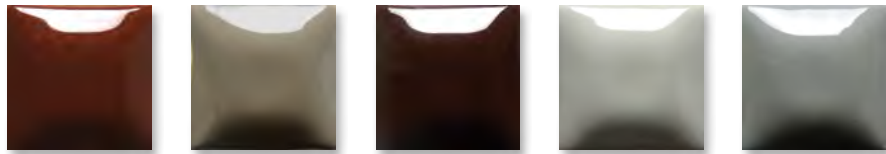
FN-046 Sage
FN-032 Canton Jade
FN-043 Bright Jade
FN-053 Mint
FN-054 Pistachio



FN-037 Chartreuse
FN-007 Green
FN-027 Glade Green
FN-020 Medium Green
FN-021 Olive Green



FN-033 Mediterranean Teal
FN-010 Tree Green
FN-038 Sand
FN-022 Tan
FN-023 Cinnamon



FN-029 Rich Chocolate
FN-045 Taupe
FN-008 Brown
FN-039 Light Gray
FN-024 Gray



FN-009 Black

Many Foundations® Opaque and Stroke & Coat® glazes are perfect companions, developed to be used together in layering and combination.



Foundations® SHEER

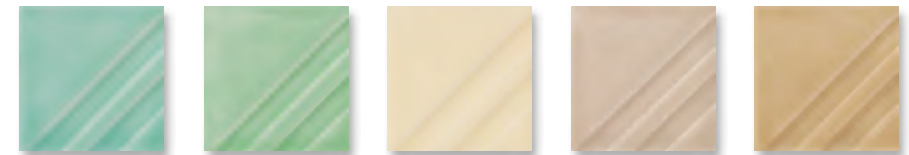
These translucent glazes add a tint of color to your work, showcasing surface textures and allowing design details to show through.



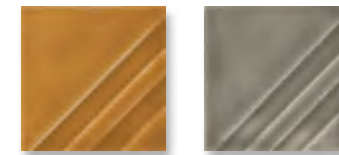
FN-221 Milk Glass White
FN-203 Dry Champagne
FN-207 Orange Slice
FN-230 Poppy
FN-209 Floral Pink



FN-208 Crystal Coral
FN-211 Sheer Blue
FN-212 Blue Diamond
FN-213 Saffire Blue
FN-231 Clearly Jade



FN-214 Pastel Jade
FN-216 Sea Glass
FN-201 Golden Clear
FN-202 Yadro
FN-204 Mudpuddle Brown



FN-205 Saddle Tan
FN-220 Sooty Grey

Foundations® MATTE

Fires to a beautiful, soft subdued matte finish. Matte finish will increase in glossiness if fired higher than cone 06.

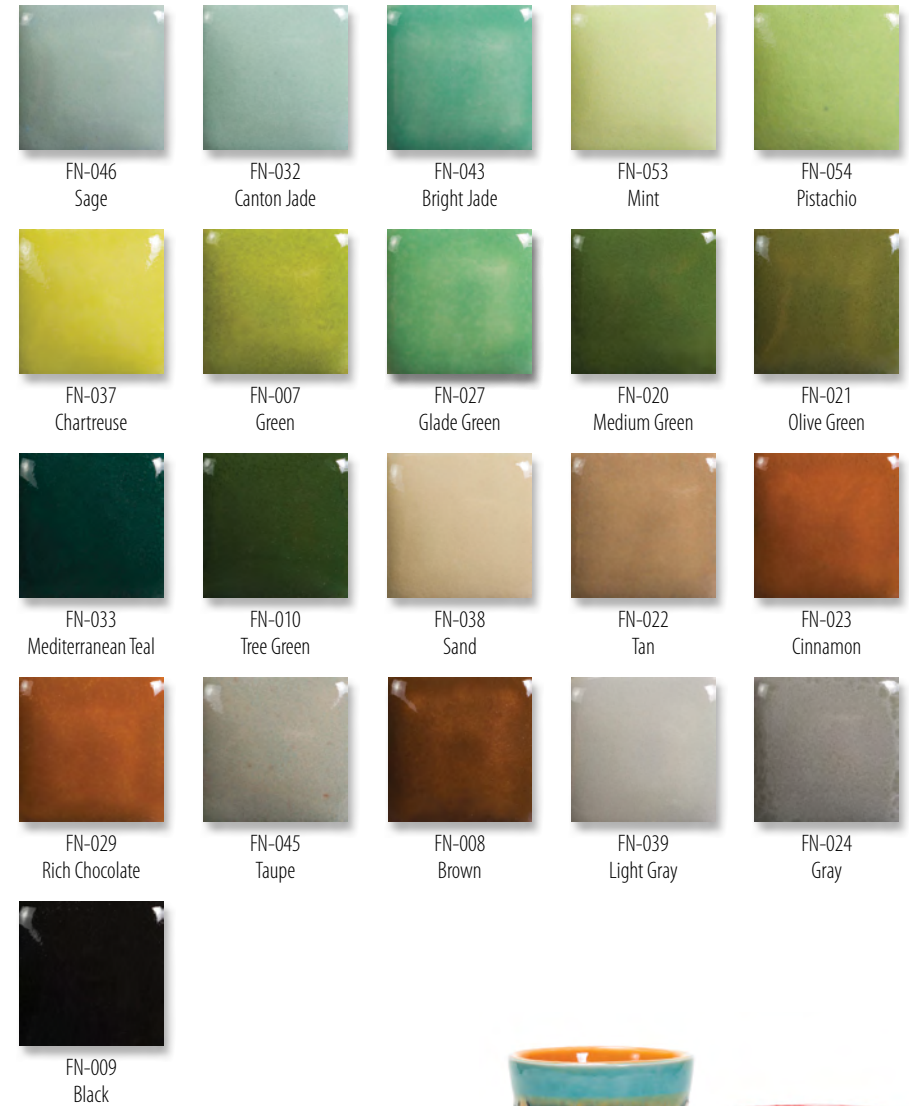


FN-301 Marshmallow White
FN-302 Ivory Cream
FN-304 Black Velvet

Cone 6 Results for Foundations® Opaque



Cone 6 Results for Foundations® Opaque



Broad Firing Range

Foundations® have been formulated to mature at cone 06/05. However most will maintain their color at higher temperatures. Refer to the individual color label or MaycoColors.com for cone 6 firing performance. We recommend testing on your clay body and in your kiln prior to use.



To view the entire collection of Foundations® at cone 6, visit MaycoColors.com

Mayco
Jungle Gems™
Crystal Glaze

For Artists of All Ages!

Mayco's Jungle Gems™ Crystal Glazes transform in the kiln when the small pieces of glass frit burst into color and intricate patterns during the firing process. Artists use these beautiful glazes to add dramatic, colorful effects to their creations. Jungle Gems™ Crystal Glazes can be used alone or in combination with other glazes and can be fired from cone 06 to 6. Refer to the individual color label for cone 6 firing performance.

Jungle Gems™ Crystal Glazes have been in the market for many years and were originally formulated using a leaded frit. In 2005, they were converted to a leadless formula, similar to the Mayco Crystalites glaze, which have always been lead-free. We have merged these two great product lines into one, all under the Jungle Gems™ brand. This merge simplifies the selection for the consumer as the glazes perform identically. Crystalite colors will keep their item numbers, name and the entire Crystal Glaze product line remains lead-free.

Jungle Gems™ Crystal Glazes are recommended for ornamental use only when applied to low fire earthenware clay bodies. All but three Jungle Gems™ glazes have been certified as Non-Toxic, suitable for use by artists of all ages when used according to manufacturer's directions. Jungle Gems™ are not recommended for dinnerware produced from low fire earthenware clay bodies as these glazes can exhibit surface textures such as cracks and crevices. While the glazed surface may pass lead & cadmium leach tests, and therefore legally considered Food Safe, attempts to adequately clean the textured surface may cause the underlying porous ware to absorb water and fail. Jungle Gems™ glazes may be considered dinnerware safe if surface texture is eliminated when firing to mid-range or high fire temperatures. We invite you to unleash your creativity with Jungle Gems™ Crystal Glazes.

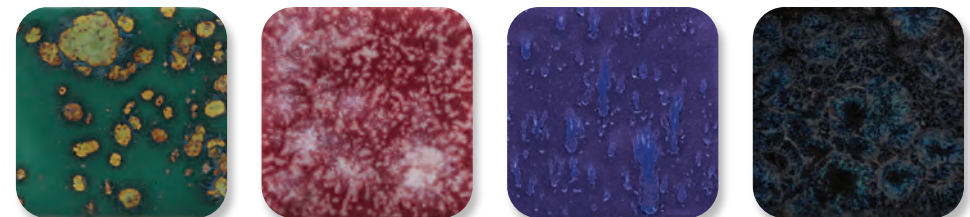
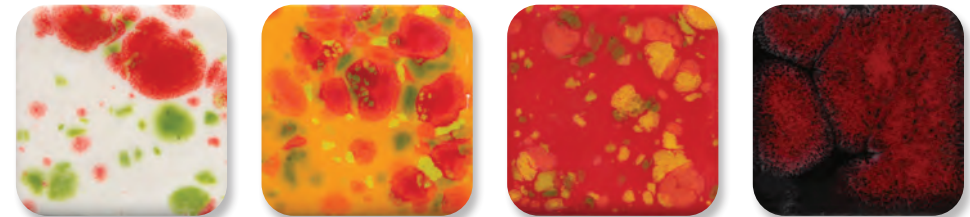
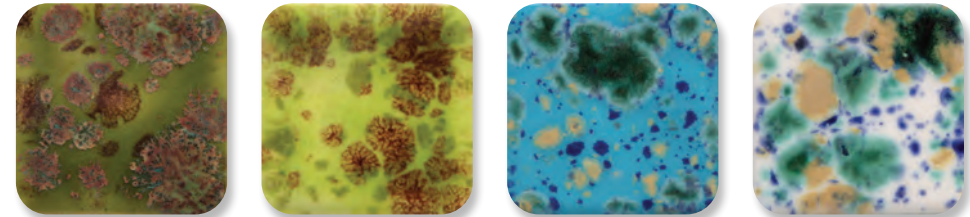
Available Sizes

4 oz jar
 16 oz pint



Art in a Jar™!

New Jungle Gems™ Glazes



CONE 06/05
 (998°C - 1031°C)
 (1828°F - 1888°F)

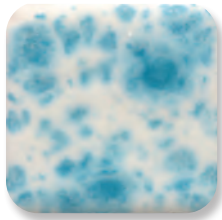


Except:
 Jungle Gems
 on page 6
 marked CL



MaycoColors.com

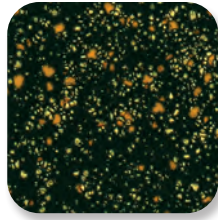




CG-788
Dutch Enamelware



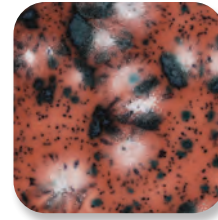
CG-795
Yadro Print



CG-798
Black Iris



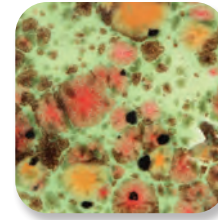
CG-954
Wildfire



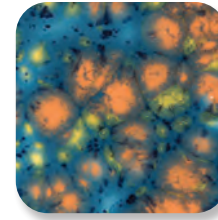
CG-980
Coral Puff



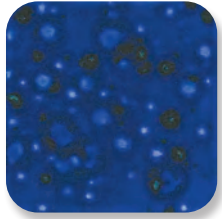
CG-981
Fruity Freckles



CG-982
Mixed Melon



CG-983
Koi Pond



CG-958
Lagoon Blue



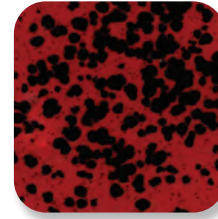
CG-962
Blue Azure



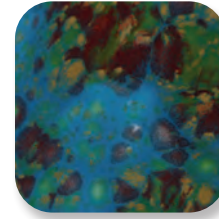
CG-963
Lemon Lime



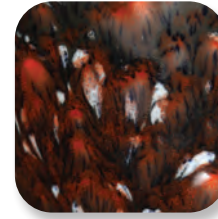
CG-964
Kaleidoscope



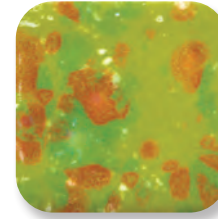
CG-984
Ladybug



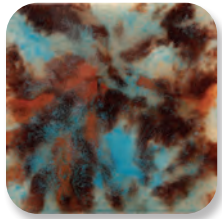
CG-985
Monet's Pond



CG-986
Smoke & Fire



CG-987
Tree Frog



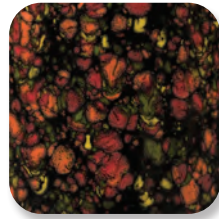
CG-965
Mocha Marble



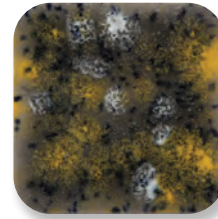
CG-968
Peppermint Twist



CG-969
Floral Fantasy



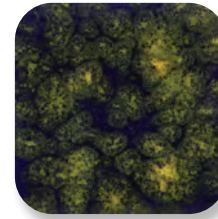
CG-970
Masquerade



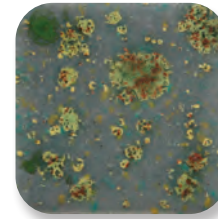
CG-988
Fireflies



CG-989
Fruit Punch



CG-990
Starry Night



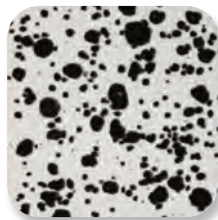
CG-991
Mountain Moss



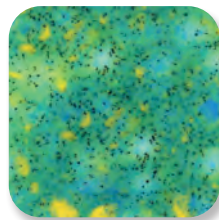
CG-972
Dragon's Breath



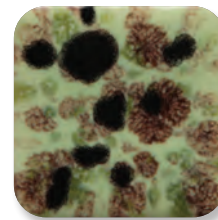
CG-974
Bloomin' Blue



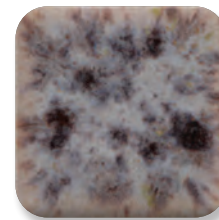
CG-977
Ink Spots



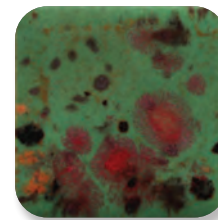
CG-979
Meadow



CG-992
Mint Chip



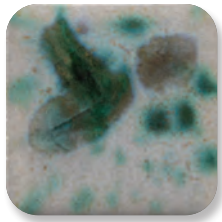
CG-993
Lavender Sprigs



CG-994
Field & Flowers



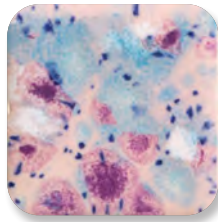
CG-995
Foggy Mist



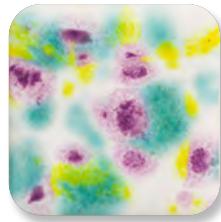
CG-996
Spring Rain



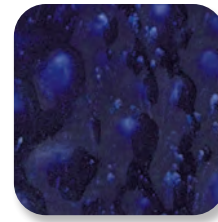
CG-997
Seafoam



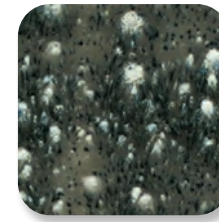
CG-998
Pink Pixie



CG-999
Jazz Notes



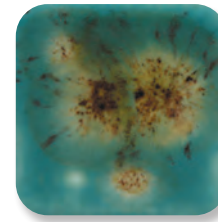
S-2716
Celestial Blue



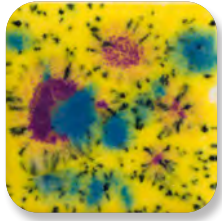
S-2718
Cosmic Black



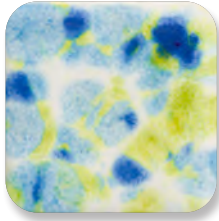
S-2723
Grape Divine



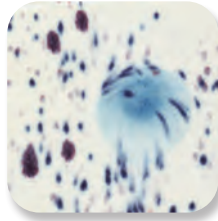
S-2724
Lotus Blossom



CG-1000
Mardi Gras



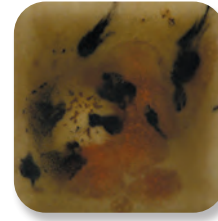
CG-1001
Gogh Iris



S-2701
Peacock Eyes



S-2702
Northern Lights



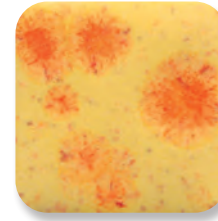
S-2725
Safari



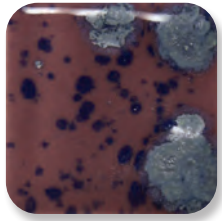
S-2726
Cheetah



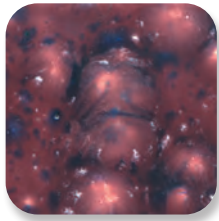
S-2727
Poppy Fields



S-2729
Citrus Splash



S-2703
Berryberry Pie



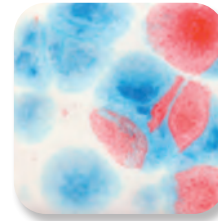
S-2704
Plum Jelly



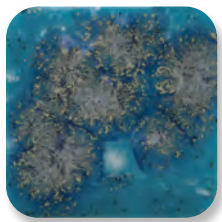
S-2708
Oriental Carmel



S-2709
Cappuccino Mint



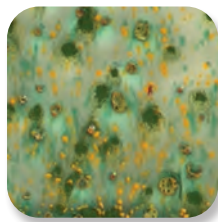
S-2731
Kaboom



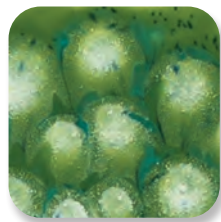
S-2711
Tahiti Grape



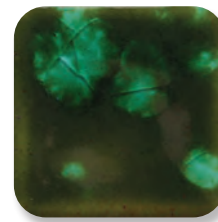
S-2712
Monsoon Seas



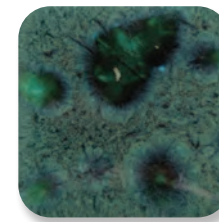
S-2714
Herb Garden



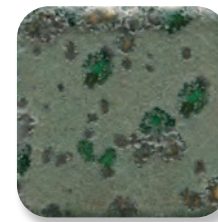
S-2715
Spotted Kiwi



CG-707
Woodland Fantasy



CG-713
Peacock Green



CG-973
Alligator

CG-707 and CG-713 are considered health caution due to soluble copper in the formulation. CG-973 is considered health caution due to barium in the formulation.



Cone 6 Results for Select Jungle Gems™ Crystal Glazes



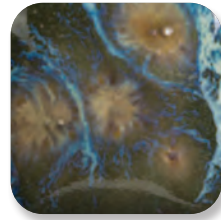
CG-718
Blue Caprice



CG-722
Seawind



CG-753
Sassy Orange



CG-780
Mystic Jade



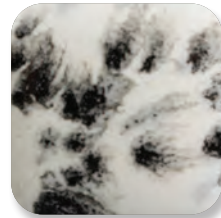
CG-954
Wildfire



CG-962
Blue Azure



CG-970
Masquerade



CG-977
Ink Spots



CG-979
Meadow



CG-980
Coral Puff



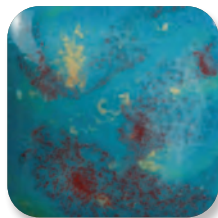
CG-981
Fruity Freckles



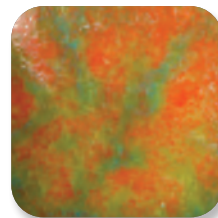
CG-982
Mixed Melon



CG-984
Ladybug



CG-985
Monet's Pond

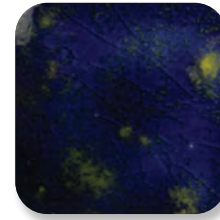


CG-987
Tree Frog

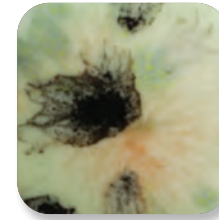


CG-988
Fireflies

Cone 6 Results for Select Jungle Gems™ Crystal Glazes



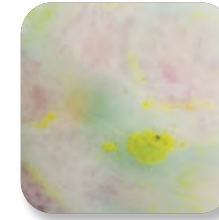
CG-990
Starry Night



CG-992
Mint Chip



CG-998
Pink Pixie



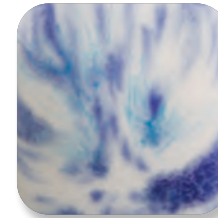
CG-999
Jazz Notes



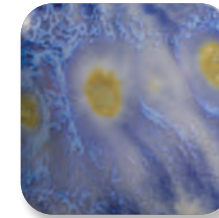
CG-1000
Mardi Gras



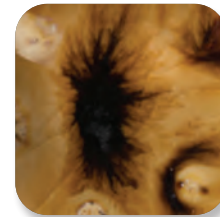
CG-1001
Gogh Iris



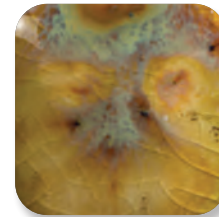
S-2701
Peacock Eyes



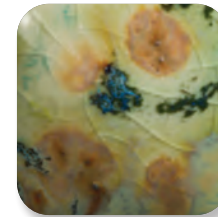
S-2703
Berryberry Pie



S-2708
Oriental Carmel



S-2709
Cappuccino Mint



S-2714
Herb Garden



S-2725
Safari



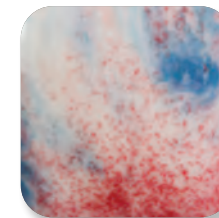
S-2726
Cheetah



S-2727
Poppy Fields



S-2729
Citrus Splash



S-2731
Kaboom



Elements™

Inspired by aspects of nature, Elements™ and Elements™ Chunkies produce lush, organic, and earthy hues. Designed to simulate the aesthetic, movement and interest of mid-range and high fire glazes in a cone 06/05 oxidation kiln firing, Elements™ and Elements™ Chunkies give artists a wide variety of options in one product, as glaze application, firing temperature and shape will influence the outcome of finished work. The glazes may vary from gloss to matte, with subtle variations occurring in each color. Elements™ and Elements™ Chunkies can also be combined or layered to create unique hues.

New Elements™ glazes



NEW
 EL-150
 Fern 



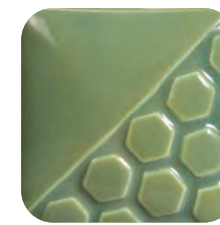
NEW
 EL-151
 Deep Water 



 EL-101
 Oyster Shell 



 EL-103
 Sea Spray 



 EL-106
 Tidal Pool 



 EL-107
 Amber Ash 



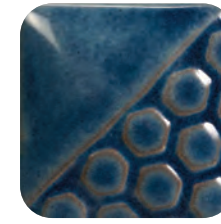
 EL-110
 Mudslide 



 EL-113
 Spanish Moss 



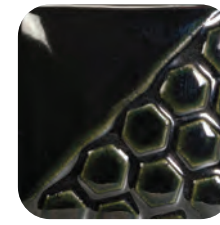
 EL-117
 Waterfall 



 EL-118
 Blue Grotto 



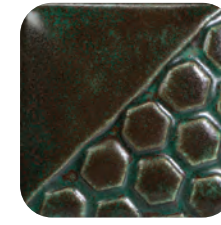
 EL-119
 Burnished Steel 



 EL-120
 Black Ice 



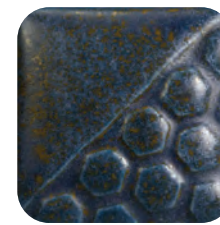
 EL-121
 Copper Adventurine 



 EL-122
 Malachite 



 EL-123
 Patina 



 EL-124
 Stormy Blue 



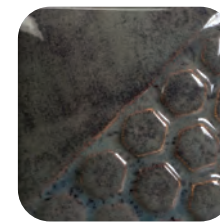
 EL-125
 Sahara Sands 



 EL-127
 Rose Granite 



 EL-128
 Wheat 



 EL-129
 Slate 



 EL-130
 Sea Green 



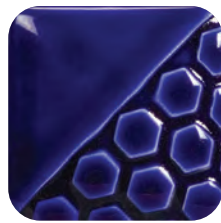
 EL-131
 Turtle Shell 



AP EL-132 Rust Red



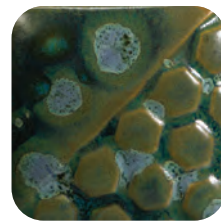
AP EL-133 Autumn



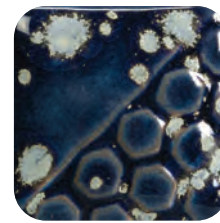
AP EL-134 Mirror Blue



CL EL-135 Rare Earth



CL EL-208 Moss Creek



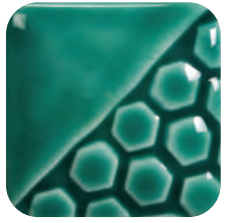
AP EL-209 Night Sky



AP EL-211 Volcanic Glow



CL EL-212 Spotted Walnut



CL EL-136 Lapis Lagoon



CL EL-137 Black Aventurine



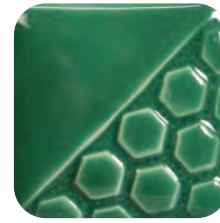
CL EL-140 Toasted Almond



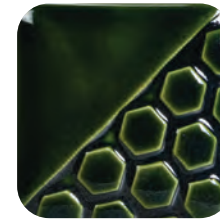
AP EL-142 Grass



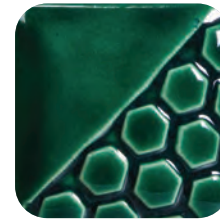
AP EL-213 Painted Desert



CL FN-215 Aztec Jade



CL FN-217 Evergreen Fir



CL FN-218 Green Sapphire



AP EL-143 Cactus Flower



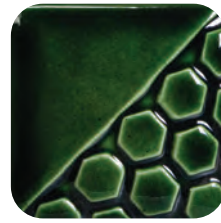
AP EL-144 Dark Amethyst



AP EL-145 Ginger Root



AP EL-146 Rain Cloud



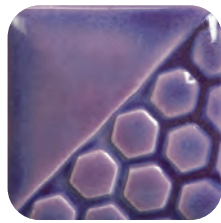
CL FN-219 Lustre Green



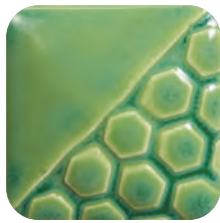
AP EL-147 Creek Bed



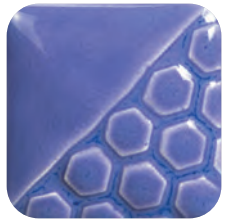
AP EL-148 Smoked Lilac



AP EL-149 Lavender Flower



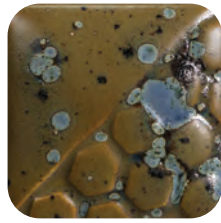
AP EL-150 Fern



AP EL-151 Deep Water



AP EL-204 Glowing Embers



CL EL-205 Jade Pebble



AP EL-207 Gold Mine

Some Elements™ glazes are not to be recommended for dinnerware produced from low fire earthenware clay bodies as these glazes can exhibit surface textures such as cracks and crevices. While the glazed surface may pass lead & cadmium leach tests, and therefore legally considered Food Safe, attempts to adequately clean the textured surface may cause the underlying porous ware to absorb water and fail. Elements™ glazes may be considered dinnerware safe if surface texture is eliminated when firing to mid-range or high fire temperatures. The key is recommended usage for low fire (earthenware cone 05/06) dinnerware. Glazes with surface texture applied to vitrified clay bodies do not have the same concern.

AP AP Non-Toxic - Suitable for use by artists of all ages when used according to manufacturer's directions.

CL CL Health Caution - Should not be used by children under the age of 12.

Dinnerware Safe - Meets Food Safe regulations as set by FDA. Dinnerware safe when used according to manufacturer's directions as it does not exhibit surface textures that could trap food and harbor bacterial growth.

Not Dinnerware Safe - Not recommended for low fire (earthenware cone 05/06) dinnerware as the fired finish contains cracks, crevices and other surface textures that can trap food and harbor bacterial growth. Attempts to clean can cause the underlying porous ware to absorb water and fail. Recommended for ornamental use only.

Pottery Cascade™

Pottery Cascades are moving, flowing glazes, commonly used under or over other glazes to create reactions. They can be applied randomly or uniformly, brushed or dabbed on with a sponge. White Cascade adds a tinge of color to glazes with which they are used. Use Pottery Cascade™ as a flux with Elements™ to create movement in the colors. Great visual effects are created when added under, over or in-between Elements™ or Elements™ Chunkies. Pottery Cascades are perfect for the low fire designer seeking to create the looks achieved at higher temperatures. Their variability ensures that no two designs will be exactly alike.



AP PC-601
Clear Cascade
*over EL-118 Blue Grotto



AP PC-602
White Cascade
*over EL-118 Blue Grotto



In Design

Use Elements™ to create designs, use in layering, or apply as a natural backdrop to your artwork.



As a Standalone Glaze

Elements™ and Elements™ Chunkies are stunning on their own, such as EL-122 Malachite shown above. Vary the number of coats and ware used to achieve different variations of one glaze.



With Designer Liner

Elements™ and Elements™ Chunkies can be used with Designer Liner.



EL-118 Blue Grotto,
EL-211 Volcanic Glow,
PC-601 Clear Cascade,
PC-602 White Cascade

Glaze Combinations

Elements™ and Elements™ Chunkies can be used in combination with other glazes, such as Jungle Gems™, Stroke & Coat® and Foundations®.



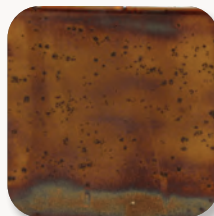
CG-993 Lavender Sprigs,
EL-147 Creek Bed



Mid-Range

While formulated for cone 06/05 use, many of the glazes perform beautifully at higher temperatures. Refer to the individual color label for cone 6 firing performances. As Elements™ tend to flow at higher temperatures, the orientation at which your glazed ware is fired (flat vs vertical) can greatly impact the look, as seen on the chips below. Due to the movement of the glaze, we recommend limiting the glaze on the bottom third of a vertical piece to avoid running off the ware. We recommend testing to determine color, surface characteristics and movement prior to use.

Fired flat
Cone 6



EL-107
Amber Ash

Fired vertically
Cone 6



EL-107
Amber Ash

Fired flat
Cone 6

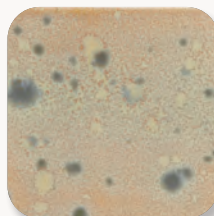


EL-124
Stormy Blue

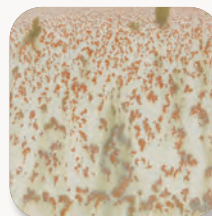
Fired vertically
Cone 6



EL-124
Stormy Blue



EL-207
Gold Mine



EL-207
Gold Mine



EL-212
Spotted Walnut



EL-212
Spotted Walnut

Many Elements™ and Elements™ Chunkies perform well at mid-range (cone 5/6) and higher temperatures (cone 9/10) but will change color. Cone 6 fired color results can be found on the left-hand side of the color label.

EL-123 Patina



Cone 06
998°C / 1828°F



Cone 6
1222°C / 2232°F



Cone 10
1285°C / 2345°F

Cone 6 Results for Select Elements™



EL-101
Oyster Shell



EL-103
Sea Spray



EL-106
Tidal Pool



EL-107
Amber Ash



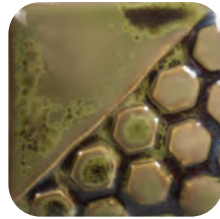
EL-110
Mudslide



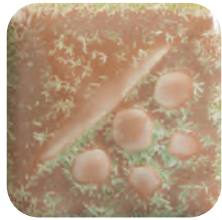
EL-119
Burnished Steel



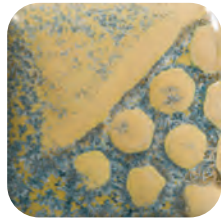
EL-121
Copper Adventurine



EL-122
Malachite



EL-123
Patina



EL-124
Stormy Blue



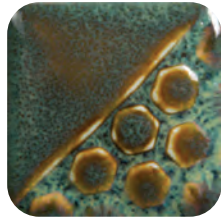
EL-125
Sahara Sands



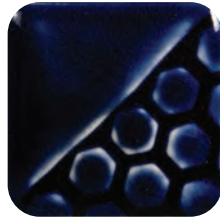
EL-128
Wheat



EL-129
Slate



EL-131
Turtle Shell



EL-134
Mirror Blue

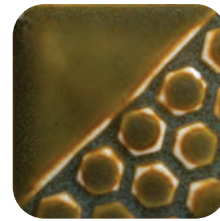


EL-135
Rare Earth

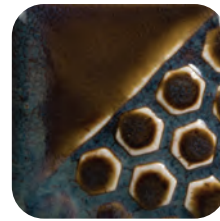
Cone 6 Results for Select Elements™



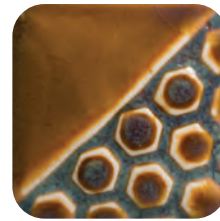
EL-140
Toasted Almond



EL-142
Grass



EL-144
Dark Amethyst



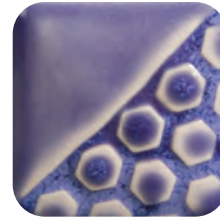
EL-145
Ginger Root



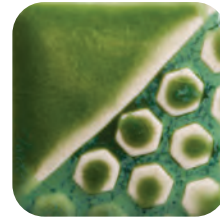
EL-146
Rain Cloud



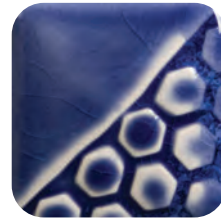
EL-147
Creek Bed



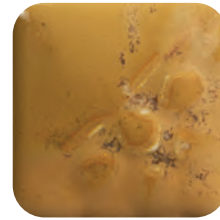
EL-149
Lavender Flower



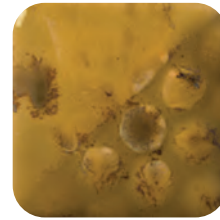
EL-150
Fern



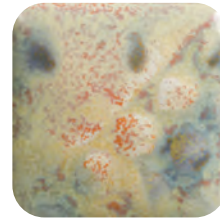
EL-151
Deep Water



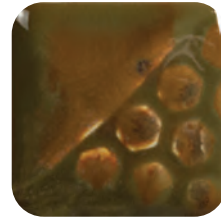
EL-204
Glowing Embers



EL-205
Jade Pebble



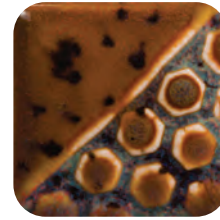
EL-207
Gold Mine



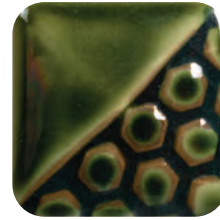
EL-208
Moss Creek



EL-212
Spotted Walnut



EL-213
Painted Desert



FN-218
Green Sapphire

To view the entire collection of Elements™ & Elements™ Chunkies at cone 6, visit MaycoColors.com

LG SERIES

for enhancing texture



LG-760
Pale Yellow



LG-61
Canary Yellow



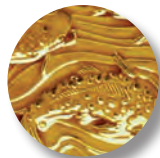
LG-63
Brilliant Yellow



LG-62
Light Yellow



LG-60
Dark Yellow



LG-65
Amber



LG-68
Vivid Orange



LG-67
Fire Orange



LG-59
Hot Red



LG-36
Freckled Brown



LG-52
Petal Pink



LG-58
Brilliant Red



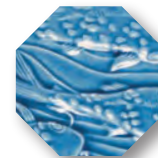
LG-34
Red Brown



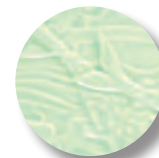
LG-54
Mulberry Red



LG-20
Medium Blue



LG-27
Turquoise Crackle



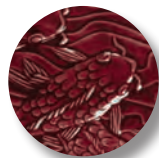
LG-42
Light Green



LG-51
Lilac



LG-57
Intense Red



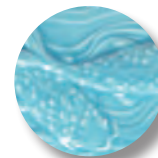
LG-50
Maroon



LG-55
Purple



LG-21
Dark Blue

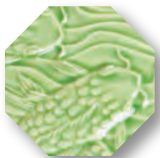


LG-24
Light Blue

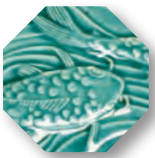


LG-23
Robin's Egg

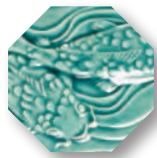




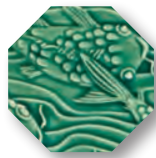
LG-45
Emerald Green



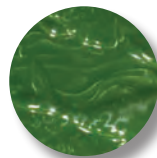
LG-25
Turquoise Green



LG-26
Turquoise



LG-46
Leaf Green



LG-48
Chrome Green



LG-40
Dark Green



LG-44
Olive Green



LG-10
Clear Transparent



LG-11
Opaque White



LG-14
Gray



LG-32
Metallic Brown



LG-1
True Black



LG-2
Black Lustre



LG-30
Chocolate Brown



** AP glazes safe for Spray Application except LG-44 Olive Green

tiles are
AMACO® 20-M
Versa Clay



Tractor House: LT-3 Old Pewter, ST-30 Rust, ST-56 Violet, ST-42 Olive, LG-14 Gray, LG-1 True Black, and LG-45 Emerald Green on AMACO® 20-M Versa Clay



textured ALLIGATOR

for the illusion of depth



Conforms to
ASTM D-4236



Conforms to
ASTM D-4236



Dinnerware
Safe



Not Dinnerware
Safe



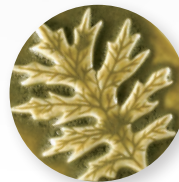
LT-13 Dalmation



LT-161 Tiger Eye



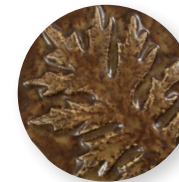
LT-147 Yellow Green



LT-17 Liana Gray



LT-166 Mottled Orange



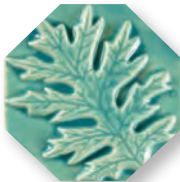
LT-34 Antique Brown



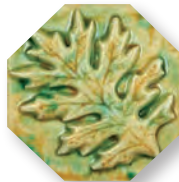
LT-132 Jewel Brown



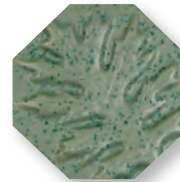
LT-12 Speckled Green



LT-22 Tahitian Blue



LT-48 Moss Agate



LT-16 Green Stone



LT-15 Speckled Blue Gray



LT-3 Old Pewter

tiles are AMACO® 20-M Versa Clay





Opalescent

for pearl-like surfaces
[best results on red clay]



O-20
Bluebell



O-42
Moss Green



O-12
Tawny



O-30
Autumn Leaf



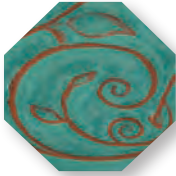
O-52
Fuchsia



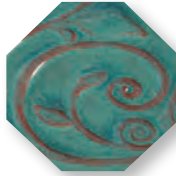
O-54
Dusty Rose



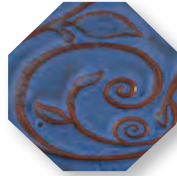
O-11
White Clover



O-21
Aquamarine



O-26
Turquoise



O-23
Sapphire Blue



O-2
Black Tulip



O-57
Mottled Burgundy

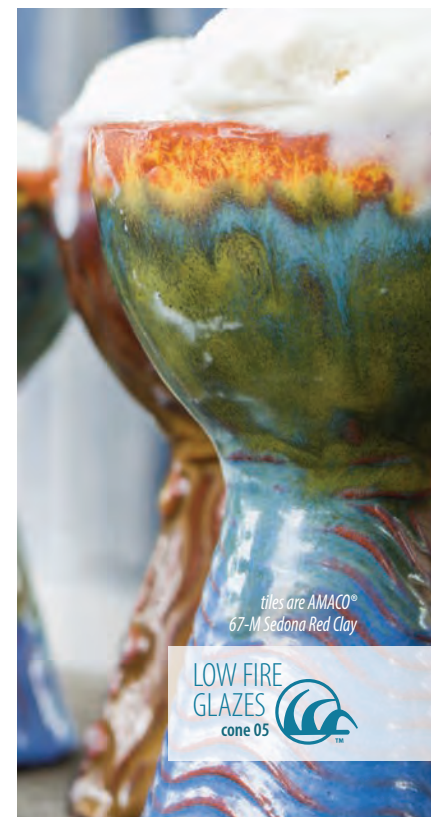


O-10
Transparent Pearl



Veggie Dish: A-40 Seafoam Green over O-54 Dusty Rose on AMACO® 67-M Sedona Red Clay

Goblet: A-61 Moss Brown over O-23 Sapphire Blue on AMACO® 67-M Sedona Red Clay



tiles are AMACO®
67-M Sedona Red Clay

LOW FIRE
GLAZES
cone 05



POTTER'S

choice



PC 1
Saturation Metallic



PC 2
Saturation Gold



PC 4
Palladium



PC 9
Vintage Gold



PC 10
June Bug



PC 11
Blue Spark



PC 12
Blue Midnight



PC 15
Satin Oribe



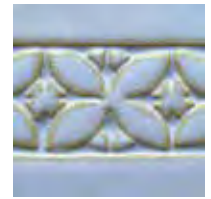
PC 16
Purple Crystal



PC 17
Honey Flux



PC 20
Blue Rutile



PC 21
Arctic Blue



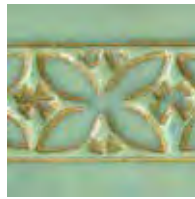
PC 22
Blue Stone



PC 23
Indigo Float



PC 24
Sapphire Float



PC 25
Textured Turquoise



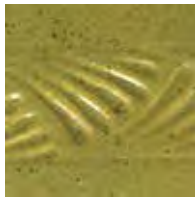
PC 26
Blue Lagoon



PC 27
Tourmaline



PC 28
Frosted Turquoise



PC 29
Deep Olive Speckled



PC 30
Temmoku



PC 31
Oatmeal



PC 32
Albany Slip Brown



PC 33
Iron Lustre



PC 34
Light Sepia



PC 36
Ironstone



PC 38
Iron Yellow



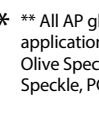
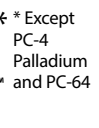
PC 40
True Celadon



PC 41
Vert Lustre



PC 42
Seaweed



* * Except PC-4 Palladium and PC-64
 ** All AP glazes are safe for spray application except PC-29 Deep Olive Speckle, PC-52 Deep Sienna Speckle, PC-59 Deep Firebrick, and

POTTER'S

choice



PC 43
Toasted Sage



PC 44
Sage



PC 45
Dark Green



PC 46
Lustrous jade



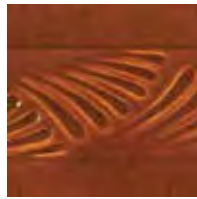
PC 47
Emerald Falls



PC 48
Art Deco Green



PC 49
Frosted Melon



PC 52
Deep Sienna Speckle



PC 53
Ancient Jasper



PC 55
Chun Plum



PC 56
Ancient Copper



PC 57
Smokey Merlot



PC 58
Tuscany



PC 59
Deep Firebrick



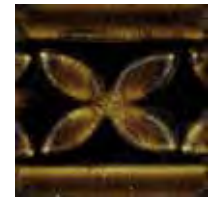
PC 61
Textured Amber



PC 62
Textured Amber Brown



PC 63
Cosmic Tea Dust



PC 64
Aventurine



PC 65
Black Aventurine



PC 66
Cosmic Oil Spot



PC 67
River Rock



PC 70
Copper Red



PC 71
Flambé



Conforms to
ASTM D-4236



Conforms to
ASTM D-4236



Conforms to
ASTM D-4236



Layering™



Dinnerware
Safe

* * Except
PC-4
Palladium
and PC-64



Safe for Spray
Application

** All AP glazes are safe for spray
application except PC-29 Deep
Olive Speckle, PC-52 Deep Sienna
Speckle, PC-59 Deep Firebrick, and



Celadon

for a mixable transparent color



C 1
Obsidian



C 3
Smoke



C 5
Charcoal



C 10
Snow



C 11
Mixing Clear



C 19
Glacier



C 20
Cobalt



C 21
Sky



C 22
Fog



C 23
Ice



C 25
Downpour



C 27
Storm



C 29
Deep Sea



C 32
Ochre



C 36
Iron



C 40
Aqua



C 41
Pear



C 43
Wasabi



C 47
Jade



C 49
Rainforest



C 50
Cherry Blossom



C 53
Weeping Plum



C 54
Snap Dragon



C 55
Poppy



C 56
Lavender



C 57
Mullberry



C 60
Marigold



C 65
Tangelo



*AP glazes
safe for Spray
Application



Gloss



SH-11
Chai Gloss



SH-21
Acai Gloss



SH-31
Cacao Gloss



SH-41
Oolong Gloss



SH-45
Matcha Gloss



SH-51
Hibiscus Gloss

Shines

for a mottled, sophisticated look

Matte



SH-12
Chai Matte



SH-22
Acai Matte



SH-32
Cacao Matte



SH-42
Oolong Matte



SH-46
Matcha Matte



SH-52
Hibiscus Matte



SM-51
Red



SM-68
Orange



SM-63
Yellow



SM-44
Chartreuse



SM-42
Mint



SM-27
Teal



SATIN MATTE

for a mixable satin feel



SM-20
Light Blue



SM-21
Dark Blue



SM-29
Blue Green

Vases are made with AMACO® 11-M
A-Mix White Stoneware Clay





SM-11
White



SM-10
Clear Satin



Conforms to
ASTM D-4236



Dinnerware
Safe



Mixable



Safe for Spray
Application



SM-1
Black

* Mixing SM-51 Red and SM-68 Orange with any other glaze in the series will result in a non-food safe glaze

Planters: SM-51 Red mixed with SM-11 White and SM-21 Light Blue mixed with SM-11 White





STONEWARE

Classic | Matte | Texture | Crystal | Wash | Flux



NEW STONEWARE GLAZES 2021

MATTE



SW-185
Rainforest



SW-186
Azurite



SW-187
Himalayan Salt



SW-188
Landslide


CRYSTAL



SW-189
Cenote



Dinnerware Safe

All Mayco Stoneware glazes are dinnerware safe when used according to manufacturer's directions, except where noted by the "Not Dinnerware Safe" icon.  This may be due to surface durability or texture of fired surface.

STONEWARE CLASSIC

Stoneware glazes offer the depth, sophistication and reliability to artists working from mid-range to high-fire temperatures. Many glazes will break over textures, revealing secondary colors and shades. The choice of clay body, thickness of glaze application, firing process and temperature will affect the fired results.



SW-180
Desert Dusk
over
SW-128
Cordova



SW-250
White Opal



SW-169
Frosted Lemon



SW-168
Coral Sands



SW-205
Coral



SW-113
Speckled Plum



SW-119
Cinnabar



SW-128
Cordova



SW-177
Raspberry Mist



SW-251
Pink Opal



SW-183
Oxblood



SW-143
Abalone



SW-165
Lavender Mist



SW-134
Eggplant



SW-125
Purple Mint



SW-255
Gray Opal



SW-166
Norse Blue



SW-211
Glacier Blue



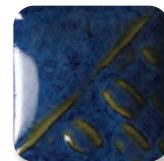
SW-252
Blue Opal



SW-101
Stoned Denim



SW-123
Sapphire



SW-100
Blue Surf



SW-212
Peacock



SW-201
Turquoise



SW-167
Sand & Sea



SW-253
Green Opal



CLASSIC & MATTE TIPS

- Mayco glazes are user-friendly in application, layering and firing.
- Used alone, stoneware glazes produce beautiful color variations; one coat will allow the clay body to show through the glaze and two to three coats deepen the color.
- SW-136 Weathered Blue, SW-137 Storm Gray, and SW-138 Lemon Meringue are unique glazes that change in appearance with number of glaze coats. One coat will display more color while additional coats will increase mottling and white variegation.



SW-166 Norse Blue over SW-168 Coral Sands

STONEWARE MATTE

Choose from solid shades to those that create interesting color variation as they move and break. Application thickness is key to making mattes work for you.



STONEWARE CRYSTAL



SW-115
Midnight Rain



SW-116
Robin's Egg



SW-117
Honeycomb



SW-118
Sea Salt



SW-146
Aurora Green



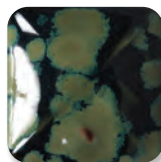
SW-147
Moonscape



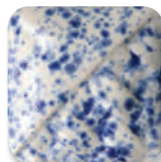
SW-148
Lime Shower



SW-150
Celadon Bloom



SW-151
Olive Float



SW-152
Blue Splatterware



SW-153
Indigo Rain



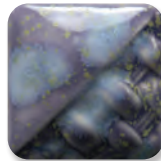
SW-154
Shipwreck



SW-155
Winter Wood



SW-156
Galaxy



SW-170
Blue Hydrangea



SW-171
Enchanted Forest



SW-176
Sandstone



SW-179
Muddy Waters



SW-180
Desert Dusk



SW-181
Night Moth



SW-189
Cenote

CRYSTAL TIPS

- Crystal glazes are designed to expand upon the surface with dazzling bursts of color.
- Crystals will settle to the bottom of the jar and will need thorough mixing prior to initial use and in between each coat.
- Apply two to three coats using a fan brush. While the glaze is wet, use your brush to redistribute crystals to achieve balanced coverage. Over-application of the crystals can cause pinholing or running.
- Crystals can create movement. Avoid having a heavy concentration of crystals near the bottom of your piece.



STONEWARE GLOSS

Stoneware Gloss glazes can be used in design, all over coverage and are the ideal product for intermixability at mid-range temperatures. The integrity of your design will remain unchanged as these glazes are incredibly stable and will not move or combine with surrounding colors.



SW-501
White Gloss



SW-502
Yellow Gloss



SW-503
Orange Gloss



SW-504
Red Gloss



SW-505
Purple Gloss



SW-506
Bright Blue Gloss



SW-510
Blue Gloss



SW-507
Bright Green Gloss



SW-509
Dark Green Gloss

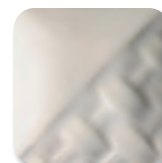


SW-508
Black Gloss

STONEWARE CLEAR



SW-001
Clear



SW-002
Matte Clear



SW-004
Zinc-Free Clear

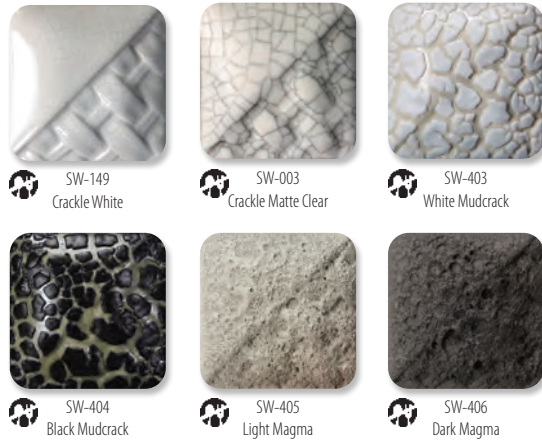
Mayco Stoneware Clear Glazes will preserve and enhance the surface of your work.

CLEAR TIPS

- **SW-001 Clear** is formulated to reach high fire temperatures up to cone 10.
- **SW-002 Matte Clear** fires to a satin matte finish at cone 5/6 and will become more satin at cone 10.
- **SW-004 Zinc-Free Clear** is designed for use on products containing chrome-based pigments to ensure that you will get a smooth and clear surface.

STONEWARE SPECIALTY

Stoneware specialty glazes were developed for special effects and surface depth.



CRACKLE TIPS

SW-149 Crackle White and SW-003 Crackle Matte Clear are developed for mid-range firing temperatures where a fine crackle pattern will develop with 2-3 coats. To highlight the crackle pattern, after firing, wipe black acrylic or ink over the ware and wipe off, allowing the ink to fill the cracks.

MUDCRACK TIPS

SW-403 White Mudcrack and SW-404 Black Mudcrack were developed to create a highly-texture raised and cracked surface. The thicker the application, the more textured the surface. Mudcrack can be directly applied to bisqueware or in combination with other mid-range glazes.



SW-403 White Mudcrack over SW-505 Purple Gloss

MAGMA TIPS

SW-405 Light Magma and SW-406 Dark Magma were developed to create a rough, cratered surface. The thicker the application, the more textured the surface will be. Magma can be directly applied to bisqueware or in combination with other mid-range glazes.

Visit MaycoColors.com for additional application details and tips.

WORKING WITH FLUX

Light Flux and Dark Flux are flowing glazes intended for use with other stoneware glazes to enhance movement, promote reactions and add interesting effects. Apply 2-3 coats under or over another mid-range glaze to bring about "hidden colors".



CONE 6 RESULTS



CONE 10 RESULTS



Technique was achieved by brushing on two (2) layers of base glaze. Then apply two (2) layers of top glaze, letting glazes dry between coats.

WASHES

Mayco Washes are a multi-purpose product with limitless possibilities. These washes can be used alone for staining techniques or with any glaze from low-fire (cone 05/06), mid-range (cone 5/6), and up to cone 10. They are beautiful in oxidation or reduction and can expand the glaze palette for an artist or teacher. Mayco Stoneware Washes are highly concentrated metallic glaze colorants formulated for ease of use and versatility. Washes are not dinnerware safe unless used in combination with clear or another glaze that creates a sealed and chemically durable finish. 🌱



SW-301
Iron Wash



SW-302
Rutile Wash



SW-303
Manganese Wash



SW-304
Copper Wash



SW-305
Cobalt Wash

WASH TIPS

- Formulated for ease of use and brushability.
- Washes can be applied in a variety of ways, but are often painted into textured areas and wiped away on the higher surface to accentuate the texture.
- Can be fired from cones 06 - 10. Chips shown are fired to cone 6.



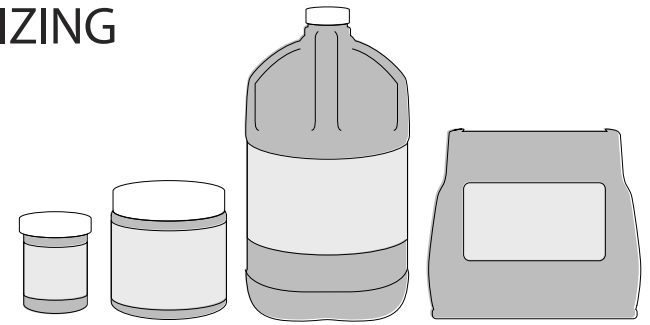
Get Inspired

Explore ideas, draw inspiration, or choose your next project from our extensive library.

Visit MaycoColors.com to access our Project Library.



AVAILABLE SIZING



	4 oz.	Wide mouth pt.	1 gal.	10 lbs. dry
Classic		√		√
Matte		√		√
Crystal		√		√
Gloss		√		√
Clear		√	√	√
Specialty	√ (Flux only)	√		√ (Magma only)
Washes	√			

Dry Glazes

Use Mayco Stoneware Dry glazes (SD-#) for fast dipping and layering, creating natural flowing effects. Fine and uniform particle size and a thorough dry mixing process make Mayco Stoneware Dry glaze consistency so perfect that sieving is optional. Available in 10 lbs. bags. Contact your Mayco Distributor to order.

Visit MaycoColors.com for additional resources.

LOW-FIRE GLAZES AT MID-RANGE

Artists can incorporate and combine other Mayco products with Stoneware glazes at mid-range (cone 5/6) temperatures. Cone 6 color performance can be found on the left side of the low-fire glaze label. Visit MaycoColors.com for more information on low-fire glazes at mid-range.

Stroke & Coat®

Many Stroke & Coat® glazes perform well at mid-range. Darker colors such as red, orange, yellow, blue and green may darken compared to their cone 06 results. Lighter colors such as tan, purple and pink will fade.



SC-33 Fruit of the Vine and SC-29 Blue Grass trailed under SW-143 Abalone

Elements™

Many Elements™ and Elements™ Chunkies create beautiful effects when used with stoneware at mid-range. Elements™ will be quite fluid and move during the firing process so keep away from the bottom of the ware.



EL-149 Lavender Flower over SW-110 Oyster and SW-134 Eggplant on the rim

Jungle Gems™

Jungle Gems™ glazes perform at mid-range for very interesting results. Crystals will have additional movement at higher temperatures and will act more as a blending agent.



CG-992 Mint Chip over SW-144 Lava Rock

Designer Liner

Designer Liner enables artists to achieve crisp, non-moving linework from cones 06 - 6 temperatures. To ensure sharpness in line quality, use a non-moving translucent or clear glaze over the top of Designer Liner.



SG-401 Black Designer Liner, SW-119 Cinnabar and SW-001 Clear

STONEWARE GLAZE COMBINATIONS

Artists can achieve incredible finishes with a simple combination of two glazes. Visit MaycoColors.com for more Stoneware glaze combinations and inspiration.

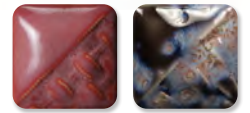
CONE 6 RESULTS



SW-180 Desert Dusk over SW-112 Tiger's Eye



SW-108 Green Tea over SW-128 Cordovan



SW-177 Raspberry Mist over SW-1546 Galaxy



SW-108 Green Tea over SW-144 Lava Rock



SW-176 Sandstone over SW-168 Coral Sands



SW-123 Sapphire over SW-118 Sea Salt

Technique was achieved by brushing on two (2) layers of base glaze. Then apply two (2) layers of top glaze, letting glazes dry between coats.

STONEWARE GLAZE COMBINATIONS

Artists can achieve incredible finishes with a simple combination of two glazes.
 Visit MaycoColors.com for more Stoneware glaze combinations and inspiration.

CONE 10 RESULTS



SW-148 Lime Shower over SW-117 Honeycomb



SW-509 Dark Green Gloss over SW-180 Desert Dusk



SW-156 Galaxy over SW-118 Sea Salt



SW-510 Blue Gloss over SW-146 Aurora Green



SW-168 Coral Sands over SW-113 Speckled Plum



SW-108 Green Tea over SW-174 Leather

Stoneware Glazes at Cone 10

Mayco Stoneware glazes are intended for use at cone 5/6, but many are also pleasing and stable at cone 10 oxidation, reduction or other alternative atmospheric firing conditions. Always test prior to use.



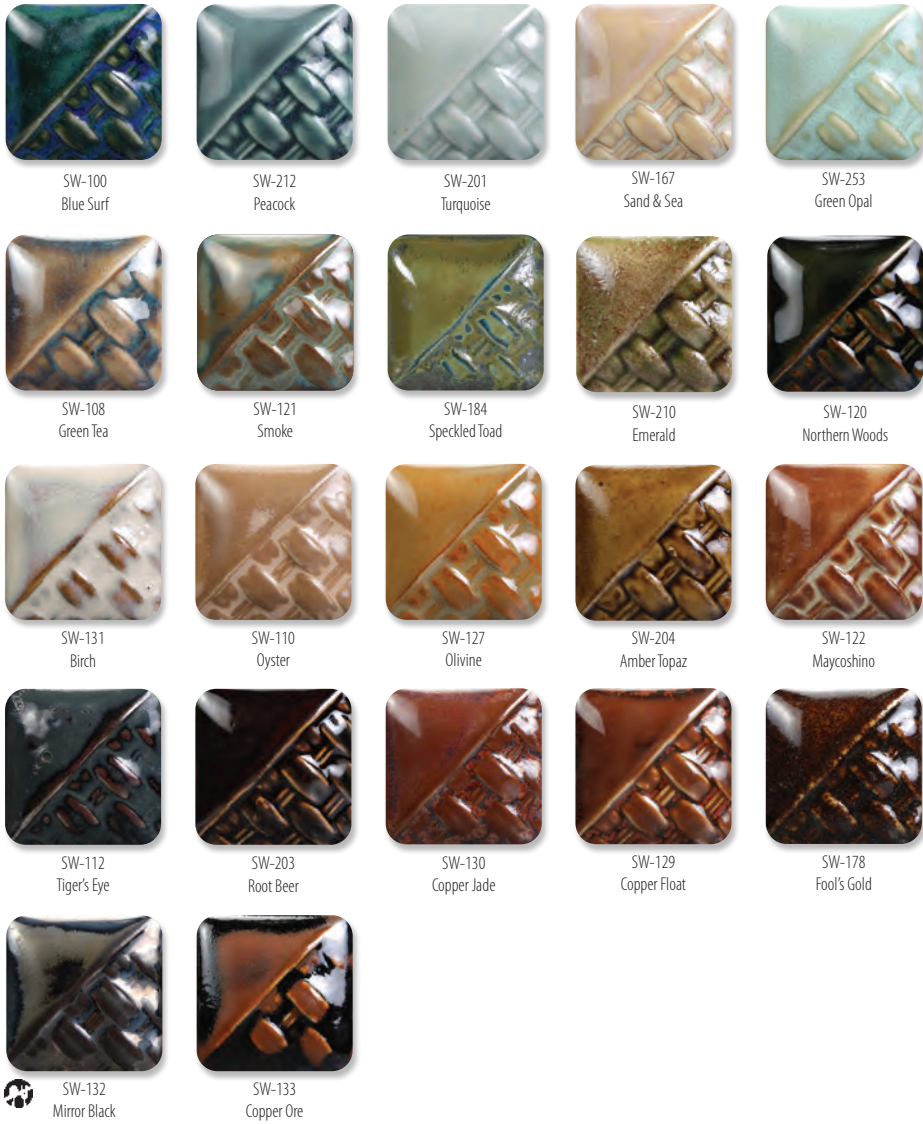
Jeff Babione

CONE 10 RESULTS

STONEWARE CLASSIC



Chips shown have been fired to cone 10 reduction on white stoneware body.



STONEWARE MATTE



The choice of clay body, thickness of glaze application, firing process and temperature will affect the fired results. Due to variability, we recommend testing prior to application to artwork.



SW-180 Desert Dusk over SW-107 Dunes

STONEWARE CRYSTAL



SW-115
Midnight Rain



SW-116
Robin's Egg



SW-117
Honeycomb



SW-118
Sea Salt



SW-146
Aurora Green



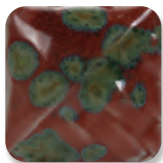
SW-147
Moonscape



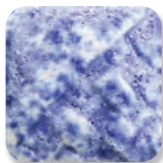
SW-148
Lime Shower



SW-150
Celadon Bloom



SW-151
Olive Float



SW-152
Blue Splatterware



SW-153
Indigo Rain



SW-154
Shipwreck



SW-155
Winter Wood



SW-156
Galaxy



SW-170
Blue Hydrangea



SW-171
Enchanted Forest



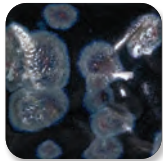
SW-176
Sandstone



SW-179
Muddy Waters



SW-180
Desert Dusk



SW-181
Night Moth



SW-189
Cenote

STONEWARE GLOSS



SW-501
White Gloss



SW-502
Yellow Gloss



SW-503
Orange Gloss



SW-504
Red Gloss



SW-505
Purple Gloss



SW-506
Bright Blue Gloss



SW-510
Blue Gloss



SW-507
Bright Green Gloss



SW-509
Dark Green Gloss



SW-508
Black Gloss

STONEWARE CLEAR



SW-001
Clear



SW-002
Matte Clear



SW-004
Zinc-Free Clear

STONEWARE SPECIALTY



SW-149
Crackle White



SW-003
Crackle Matte Clear



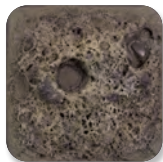
SW-403
White Mudcrack



SW-404
Black Mudcrack



SW-405
Light Magma



SW-406
Dark Magma



SW-401
Light Flux

(over SW-119 Cinnabar)



SW-402
Dark Flux

(over SW-119 Cinnabar)

WASHES



SW-301
Iron Wash



SW-302
Rutile Wash



SW-303
Manganese Wash



SW-304
Copper Wash



SW-305
Cobalt Wash

Washes are Not Dinnerware Safe when used alone.



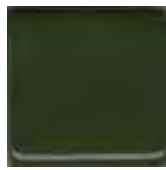
Coyote Clay & Color Gloss Glazes Cone 6



MBG001
Almost Teal



MBG002
Black



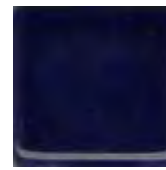
MBG005
Chrome Green



MBG006
Cinnamon Stick



MBG007
Clear



MBG008
Cobalt Blue



MBG011
Eggshell



MBG013
Light Blue



MBG015
Mint



MBG017
Red Orange



MBG019
Red



MBG020
Orange



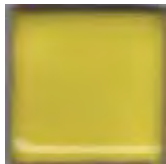
MBG023
White



MBG025
Yellow Orange



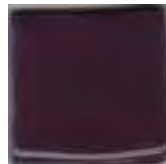
MBG048
Oatmeal



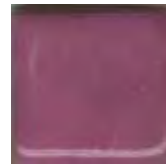
MBG050
Buttercup



MBG051
Pumpkin



MBG053
Pansy Purple



MBG054
Violet

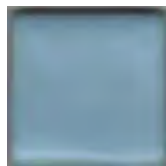


MBG071
Really Red

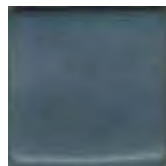
Coyote Clay & Color Satin Glazes Cone 6



MBG074
Alabaster Satin



MBG075
Baby Blue Satin



MBG076
Cerulean Satin



MBG077
Charcoal Satin



MBG078
Cherry Satin



MBG079
Coral Satin



MBG080
Forest Satin



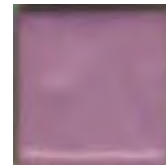
MBG081
Hazelnut Satin



MBG082
Lapis Satin



MBG083
Lemon Cream Satin



MBG084
Orchid Satin



MBG085
Seafoam Satin

Coyote Clay & Color Matt Glazes Cone 6



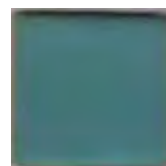
MBG024
Blue Matte



MBG029
Creamy Matt



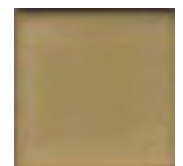
MBG030
Creamy Matt Specks



MBG033
Turquoise Matt



MBG047
Green Matt



MBG049
Iron Matt

Coyote Clay & Color Crawl Glazes Cone 6



MBG062
Blue Crawl



MBG063
Cactus Crawl



MBG064
Chocolate Crawl



MBG065
Croc Crawl



MBG073
White Crawl



MBG110
Black Crawl



**Coyote Clay & Color
Shino Glazes
Cone 6**



MBG042
Shino



MBG043
Blue Shino



MBG044
Green Shino



MBG045
Light Shino



MBG059
Espresso Bean



MBG061
Desert Sage



MBG067
Light Blue Shino



MBG068
Butterscotch Shino



MBG086
Light Green Shino



MBG087
Cedar Shino



MBG088
Goldenrod Shino



MBG089
Leopard Shino



MBG090
Mocha Shino



MBG092
Plum Shino



MBG093
Pistachio Shino



MBG094
Sandtone Shino



MBG096
Steel Gray Shino



MBG097
Sunrise Shino

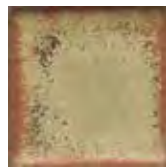
**Coyote Clay & Color
Archie's
Glazes
Cone 6**



MBG026
Gun Metal Green



MBG028
Blue Purple



MBG031
Red Gold



MBG034
Archie's Base



MBG055
Opal



MBG056
Eggplant



MBG057
Rhubarb



MBG058
Ice Blue



MBG240
Frosted Topaz



MBG241
Magenta Sky



MBG242
Papaya



MBG243
Parakeet Yellow

**Coyote Clay & Color
Frank's
Colored
Celadon
Glazes
Cone 6**



MBG098
Dusty Rose



MBG099
Sedona Sunset



MBG100
Peach Blush



MBG101
Stormy Sea



MBG102
Aqua



MBG103
Key Lime



MBG104
Peacock Green



MBG105
Root Beer



MBG106
Sunshine Yellow



MBG107
Night Sky



MBG108
Sapphire



MBG109
Rainy Day



**Coyote Clay & Color
Enduro-Color
Glazes
Cone 6**



MBG180
Honeydew



MBG181
Cool Artichoke



MBG182
Satin White Liner



MBG183
Deep Avocado



MBG184
Cornsilk



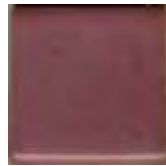
MBG185
Walnut



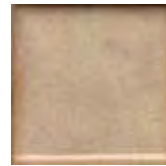
MBG186
Gloss White Liner



MBG187
Apricot



MBG188
Sweet Plum



MBG189
Beachnut



MBG190
Summer Peach



MBG191
Blue Cornflower

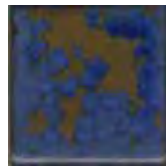
**Coyote Clay & Color
Crystalline
Slow Cool
Glazes
Cone 6**



MBG160
Ivory Crystal



MBG161
Celadon (Crystal)



MBG162
Lagoon (Crystal)



MBG163
Aurora (Crystal)



MBG164
Nebula (Crystal)



MBG165
Rose Crystal

**Coyote Clay & Color
Constellation
Glazes
Cone 6**



MBG170
Autumn Spice



MBG171
Mars Iron Red



MBG172
Light Gold



MBG173
Summer Spice



MBG174
Orion



MBG175
Antares



MBG176
Andromeda



MBG177
Aquila



MBG178
Gemini



MBG179
Aries

**Coyote Clay & Color
Fantasy
Glazes
Cone 6**



MBG210
Ancient Iron



MBG211
Azure Dream



MBG212
Enchanted Sunset



MBG213
Fairy Rose



MBG214
Sorcerer's Stone



MBG215
Unicorn Horn



MBG216
Amethyst



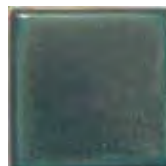
MBG217
Antique Pearl



MBG218
Dragon's Eye



MBG219
Firefly Garden



MBG220
Hydra Scale



MBG221
Phoenix Egg



**Coyote Clay & Color
Vibro-Color
Glazes
Cone 6**



MBG200
Mediterranean Sea



MBG201
Passion Red



MBG202
Periwinkle



MBG203
Sundrop

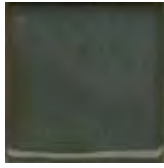


MBG204
Tiger Lily



MBG205
Turquoise Lake

**Coyote Clay & Color
Mottled
Glazes
Cone 6**



MBG004
Cactus Green



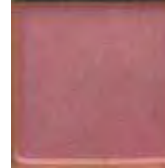
MBG009
Croc Blue



MBG012
Fire Opal



MBG016
Mottled Blue



MBG021
Sunset Pink



MBG038
Pam's Green



MBG066
JB's Brown



MBG070
Pam's Blue

**Coyote Clay & Color
Copper and
Iron Glazes
Cone 6**



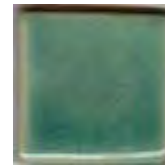
MBG027
Toshi Brown



MBG032
Rust Brown



MBG035
Copper Blue



MBG036
Crazed Copper



MBG037
Oasis



MBG040
Saturated Iron



MBG120
Bronze Temmoku



MBG130
Snowy Plum



MBG131
Oxblood

**Coyote Clay & Color
Texas Two-
Step Oilspot
Glazes
Cone 6**

**Step One-
Undercoats**



MBG140
Licorice



MBG141
Coffee Bean



MBG142
Brick Red

**Step Two-
Overcoats**



MBG150
Blue Moon



MBG151
Birch



MBG152
Texas Rose



MBG153
Marshmallow



MBG154
Sea Mist

Opulence Gloss Glazes-Cone 6



OP-114
Ultra White



OP-125
Clear



OP-127
Black



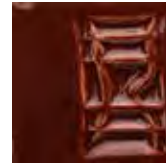
OP-138
Heavy Cream



OP-240
Burgundy



OP-262
Red Earth



OP-279
Redwood



OP-346
Gloss White



OP-350
Polished Stone



OP-362
Grape



OP-368
Midnight Blue



OP-394
Hunter Green



OP-421
Real Teal



OP-441
Turquoise



OP-447
Dark Spruce Green



OP-461
Evening Shade



OP-481
Grease



OP-502
Denim Blue



OP-503
Celadon



OP-504
Limerick



OP-508
Goldenrod



OP-512
Tropical Melon



OP-518
Red Wagon

**Opulence
Reduction
Look Glazes-
Cone 6**



OP-600
Antique Iron



OP-601
Autumn Frost



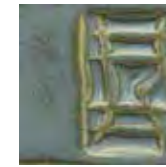
OP-603
Floating Blue



OP-604
Calico



OP-605
Blue Monday



OP-606
Smokey Mountain Mist



OP-607
Sea Spray



OP-608
Pebble Beach



OP-609
Milky Way



OP-611
Eggshell



OP-614
Paprika



OP-616
Celery



OP-617
Galaxy



OP-620
Cherry Blossom



OP-623
Orange



OP-625
Blue Odyssey



OP-628
Plum



OP-630
Red Shimmer



OP-650
Shino



OP-656
Butterscotch

Opulence EnviroColor Semi Matte Glazes-Cone 6



OP-803
Winter Day



OP-808
London Fog



OP-810
Sandstone



OP-815
Bamboo



OP-836
Wildflower



OP-840
French Bleu



OP-845
Overcast



OP-851
Pine Forest



OP-852
Meadow



OP-856
Everglade



OP-865
Petrified Wood



OP-869
Bark



OP-890
Chicory

Opulence Translucent-Cone 6



OP-933
Lemon Drop



OP-941
Violet



OP-945
Ultramarine



OP-950
Icy Mint



OP-957
Stormy Skies



OP-958
Emerald



OP-960
Whole Wheat



OP-964
Tiger's Eye



OP-971
Bubble Gum



OP-975
Retro Red

Opulence Satin Matte-Cone 6



OP-710
Clear as a Bell



OP-713
Marshmallow



OP-720
Cast Iron



OP-730
Orange Sherbet



OP-733
Beeswax



OP-740
Lima Bean



OP-751
Cornflower



OP-753
Wisteria



OP-761
Flamingo



OP-764
Cranberry



OP-768
Rooster Red